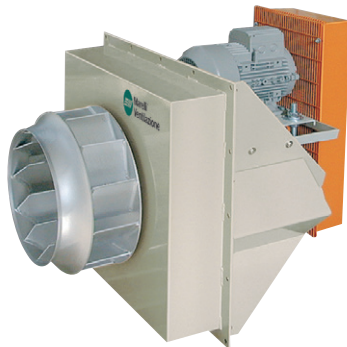


MVCMRH



Belt-driven fans fitted with electric motors and a standardised set of pulleys, belts and protectors in accordance with standard ISO 13857 and a heat-resistant compartment with a 150 mm thick mineral fibre coating, for horizontal operation



Fan:

- Extremely thick sheet steel structure.
- Impeller with reaction blades in extremely robust sheet steel
- Transmission group with cast iron bearings and support

Motor:

- IE3 efficiency motors for powers equal to or higher than 0.75 kW except single-phase, 2-speed and 8-poles
- Class F motors with ball bearings and IP55 protection
- Three-phase 230/400 V-50 Hz (up to 4 kW) and 400/690 V-50 Hz (powers higher than 4 kW)
- Maximum temperature of air to be carried: -20°C +300°C

Finish:

- Treated with heat-resistant paint

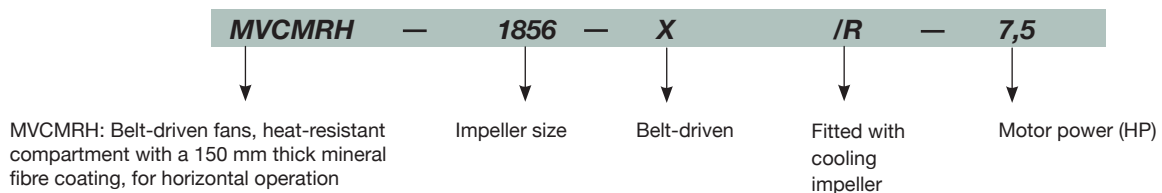
On request:

- Special windings for different voltages
- Fan made from refractory steel for temperatures up to 400°C
- Execution for vertical operation



External greasers for ease of maintenance

Order code

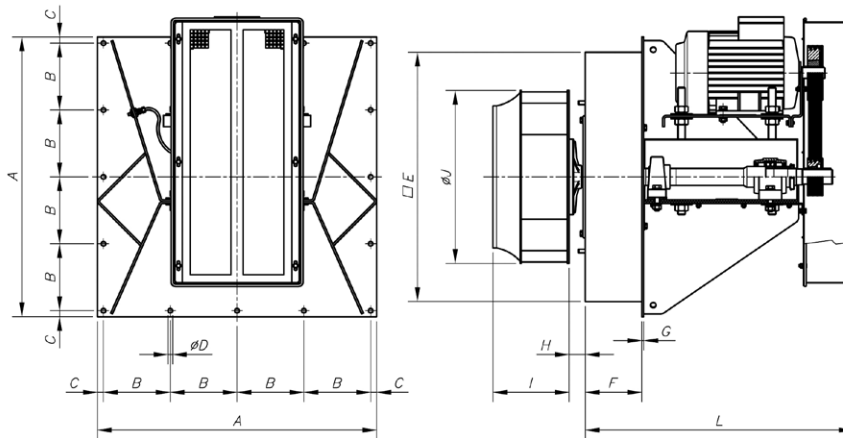


Technical characteristics

Model	Speed (r/min)	Maximum admissible current (A)			Installed power (kW)	Maximum flow rate (m³/h)	Sound pressure level dB(A)	Approx. weight (kg)
		230 V	400 V	690 V				
MVCMRH-1445-X/R-3 IE3	1700	7.93	4.56		2.20	9620	79	204
MVCMRH-1445-X/R-4 IE3	1910	10.70	6.15		3.00	10810	81	212
MVCMRH-1445-X/R-5.5 IE3	2120	13.90	8.00		4.00	12000	83	228
MVCMRH-1650-X/R-4 IE3	1530	10.70	6.15		3.00	9910	80	217
MVCMRH-1650-X/R-5.5 IE3	1720	13.90	8.00		4.00	11140	82	233
MVCMRH-1650-X/R-7.5 IE3	1910		10.30	5.97	5.50	12370	84	273
MVCMRH-1856-X/R-5.5 IE3	1365	13.90	8.00		4.00	14210	79	243
MVCMRH-1856-X/R-7.5 IE3	1535		10.30	5.97	5.50	15980	81	283
MVCMRH-1856-X/R-10 IE3	1705		13.90	8.06	7.50	17780	83	273
MVCMRH-2063-X/R-7.5 IE3	1365		10.30	5.97	5.50	22860	82	288
MVCMRH-2063-X/R-10 IE3	1515		13.90	8.06	7.50	25370	84	278
MVCMRH-2063-X/R-15 IE3	1700		20.90	12.10	11.00	28470	86	305
MVCMRH-2271-X/R-15 IE3	1370		20.90	12.10	11.00	32300	87	350
MVCMRH-2271-X/R-20 IE3	1540		27.90	16.20	15.00	36300	90	375
MVCMRH-2380-X/R-25 IE3	1280		35.10	20.30	18.50	43885	83	405
MVCMRH-2380-X/R-30 IE3	1365		41.00	23.80	22.00	46800	85	422



Dimensions mm



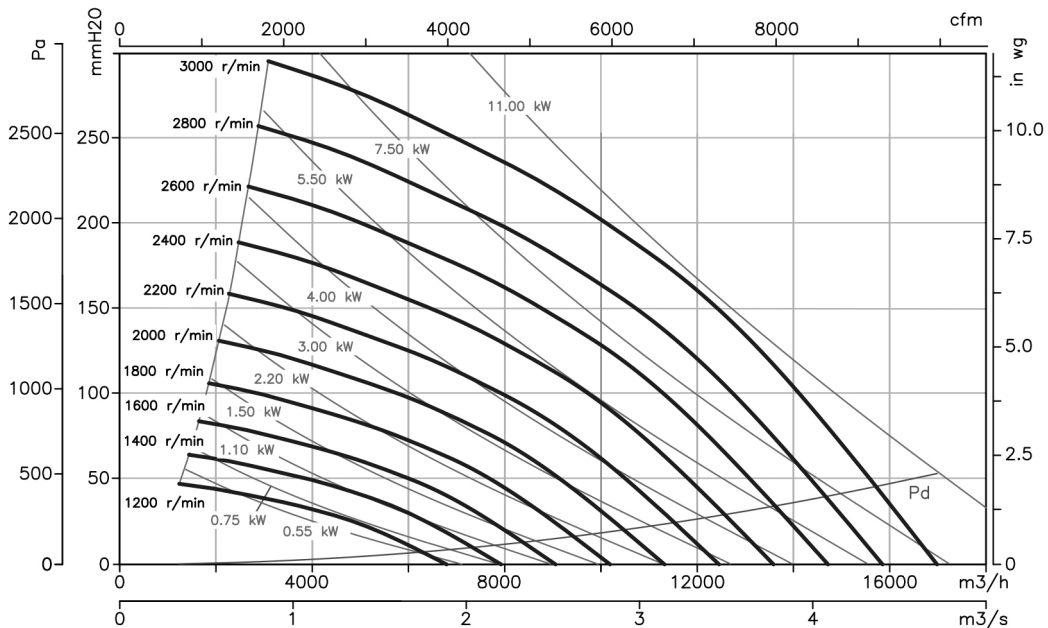
	A	B	C	øD	E	F	G	H	I	øJ	L
MVCMRH-1445-X/R-3	740	177	16	12	660	150	5	43	202	458	710
MVCMRH-1445-X/R-4	740	177	16	12	660	150	5	43	202	458	710
MVCMRH-1445-X/R-5'5	740	177	16	12	660	150	5	43	202	458	710
MVCMRH-1650-X/R-4	740	177	16	12	660	150	5	43	224	508	710
MVCMRH-1650-X/R-5'5	740	177	16	12	660	150	5	43	224	508	710
MVCMRH-1650-X/R-7'5	740	177	16	12	660	150	5	43	224	508	710
MVCMRH-1856-X/R-4	800	192	16	12	720	150	5	43	245.5	573	816
MVCMRH-1856-X/R-5'5	800	192	16	12	720	150	5	43	245.5	573	816
MVCMRH-1856-X/R-7'5	800	192	16	12	720	150	5	43	245.5	573	816
MVCMRH-2063-X/R-7'5	800	192	16	12	720	150	5	43	274	644	816
MVCMRH-2063-X/R-10	800	192	16	12	720	150	5	43	274	644	816
MVCMRH-2063-X/R-15	800	192	16	12	720	150	5	43	274	644	816
MVCMRH-2271-X/R-15	970	233	20	14	870	150	5	43	295	719	817
MVCMRH-2271-X/R-20	970	233	20	14	870	150	5	43	295	719	817
MVCMRH-2380-X/R-25	970	232.5	20	14	870	150	5	53.5	400	810	902
MVCMRH-2380-X/R-30	970	232.5	20	14	870	150	5	53.5	400	810	902

Characteristic curves

Q = Flow rate in m³/h, m³/s and cfm.

Pe = Static pressure in mm H₂O, Pa and inwg.

MVCMRH 1445

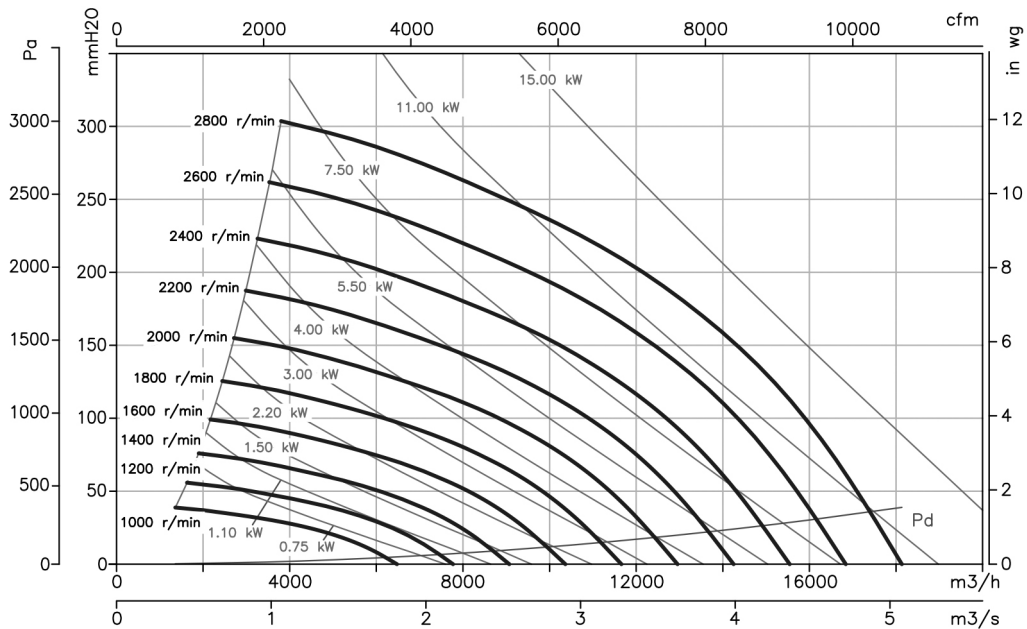


Characteristic curves

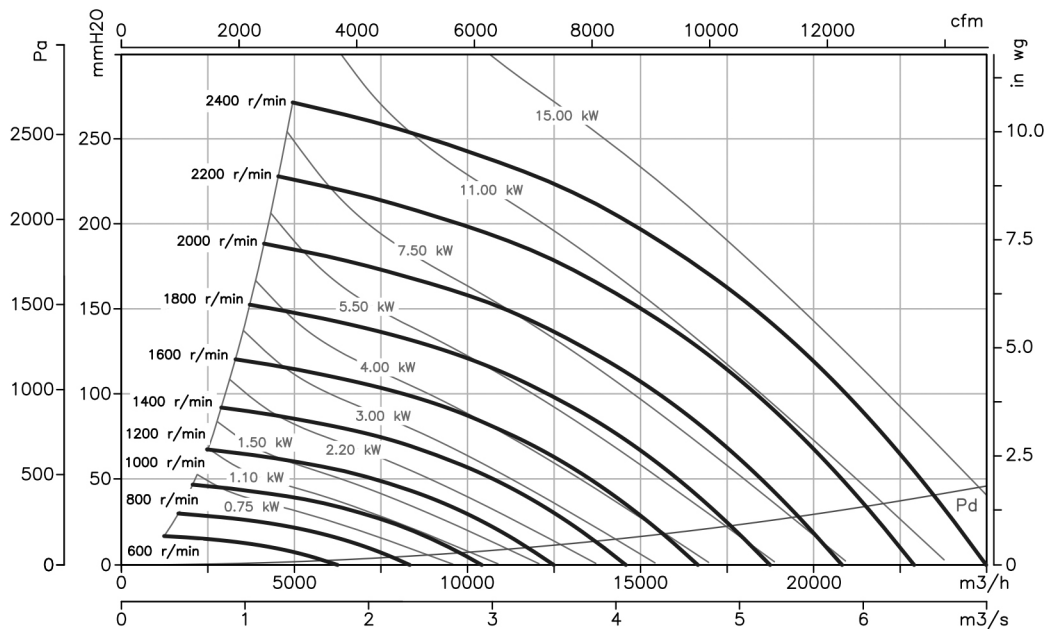
Q = Flow rate in m³/h, m³/s and cfm.

Pe = Static pressure in mm H₂O, Pa and inwg.

MVCMRH 1650



MVCMRH 1856



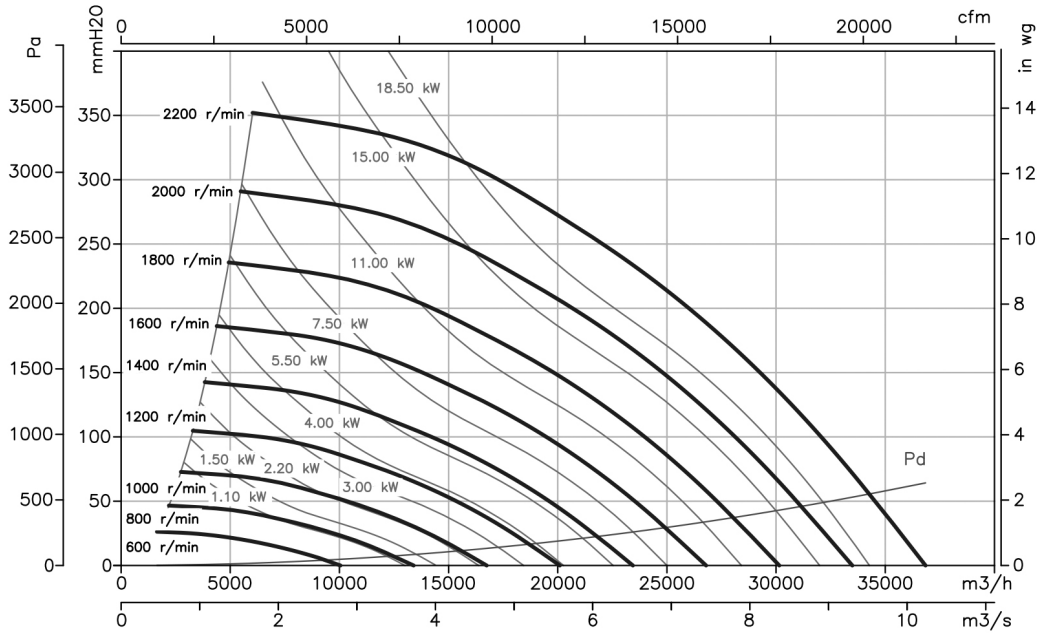


Characteristic curves

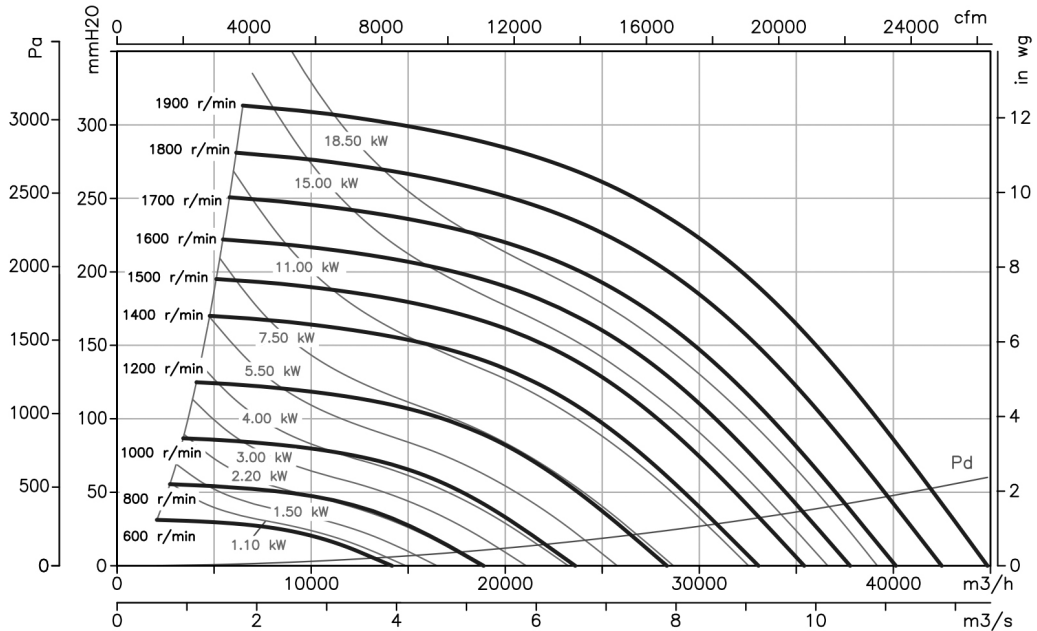
Q = Flow rate in m³/h, m³/s and cfm.

Pe = Static pressure in mm H₂O, Pa and inwg.

MVCMRH 2063



MVCMRH 2271

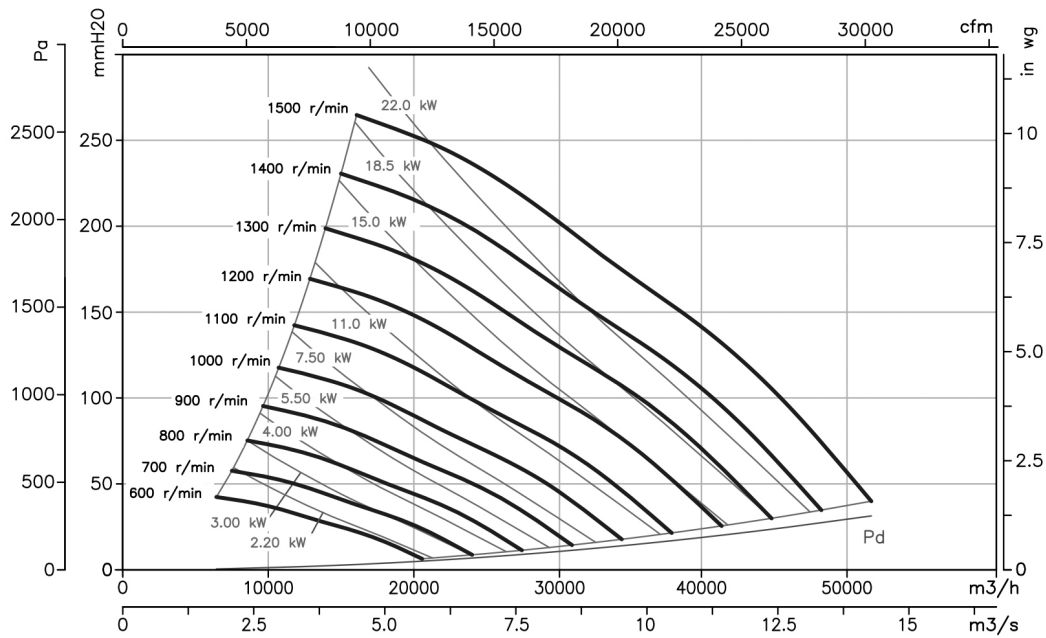


Characteristic curves

Q = Flow rate in m³/h, m³/s and cfm.

Pe = Static pressure in mm H₂O, Pa and inwg.

MVCMRH 2380



Accessories

See accessories section.

