

ECB/O

Stainless steel centrifugal fans especially designed for extracting hot air at a max. temperature of 80°C and water vapour from extract hoods with a horizontal air outlet
Especially designed for bread and pastry ovens as well as industrial ovens



- Fan:**
- Sheet steel casing
 - Sheet steel multiblade impeller
 - Motor directly coupled to flange B-5

- Motor:**
- IE3 efficiency motors for powers equal to or higher than 0.75 kW except single-phase, 2-speed and 8-pole
 - IP55 protection
 - Three-phase 230/400 V 50 Hz (up to 4 kW) and 400/690 V 50 Hz (powers higher than 4 kW)
 - Maximum temperature of air to be carried: -25°C +80°C

- Finish:**
- Corrosion resistant with heat resistant paint, aluminium in colour

- On request:**
- Special windings for different voltages
 - Stainless steel-304 stainless steel fan



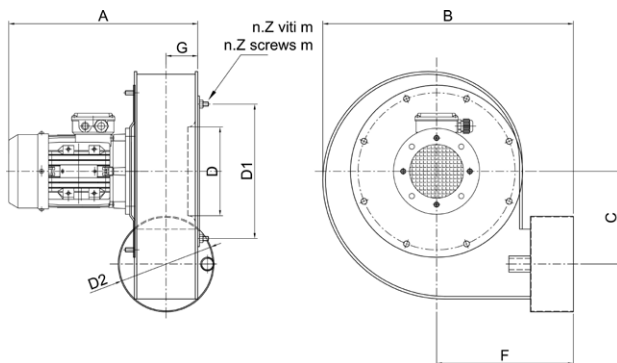
Upon request: fan support flange

Characteristics

MOD.	FRAME	kW	RPM	dB(A)	CAPACITY (m ³ /s)									
					0.23	0.27	0.3	0.33	0.38	0.42	0.47	0.53	0.58	0.67
					TOTAL PRESSURE (mmH ₂ O)									
ECB 250 O	71B4	0.37	1350	60	40	42	43	44	45	45	40	35		
ECB 300 O	71B4	0.37	1350	65			47	49	50	50	51	50	48	43

Flow level margin ±5%
 Noise level margin +3...5 dB

Dimensions mm

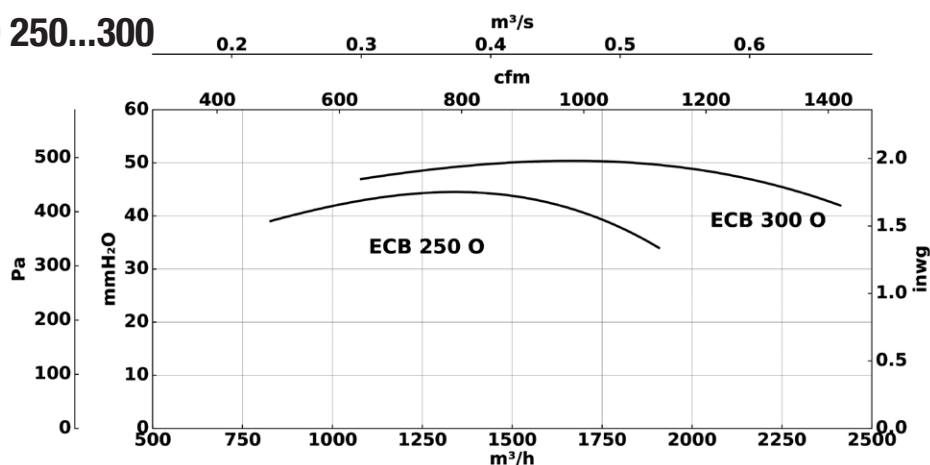


MOD.	FRAME	kW	RPM	A	B	C	F	G
ECB 250 O	71B	0.37	1350	352	466	173	255	60
ECB 300 O	71B	0.37	1350	402	575	202	322	83

MOD.	D	D1	m	Z	D2	kg
ECB 250 O	165	250	M8	6	178	16
ECB 300 O	190	250	M8	6	241	18

Characteristic curves

ECB/O 250...300



Total pressure

Flow level margin ±5%
 Noise level margin +3...5 dB
 Margin of kW absorbed ±3%